



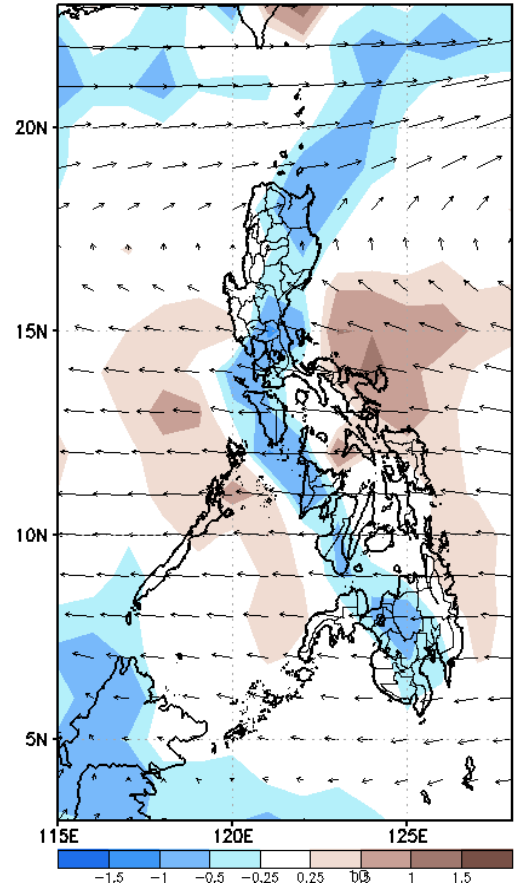
# Week 1 & Week 2 Forecast for the Philippines using GEFS Model



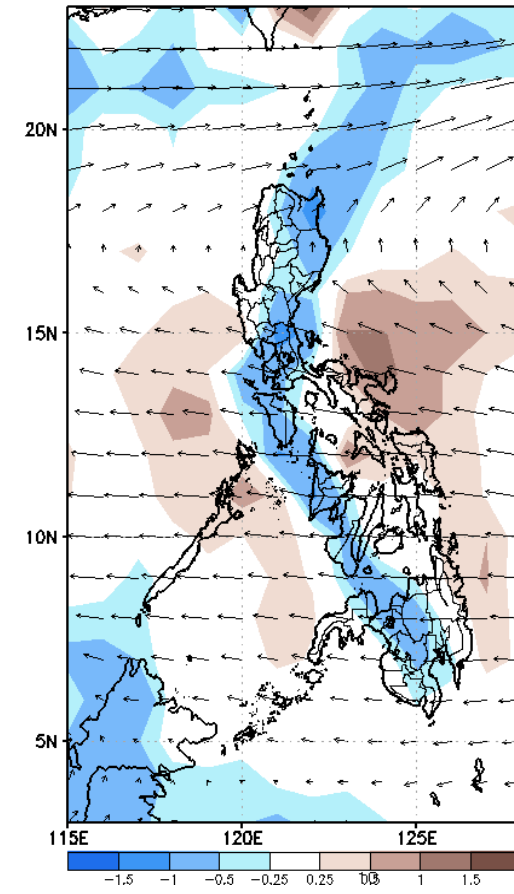
# GEFS Week-1 Forecasts: Wind Anomaly Forecast

Week 1: Jan 25 - 31, 2023

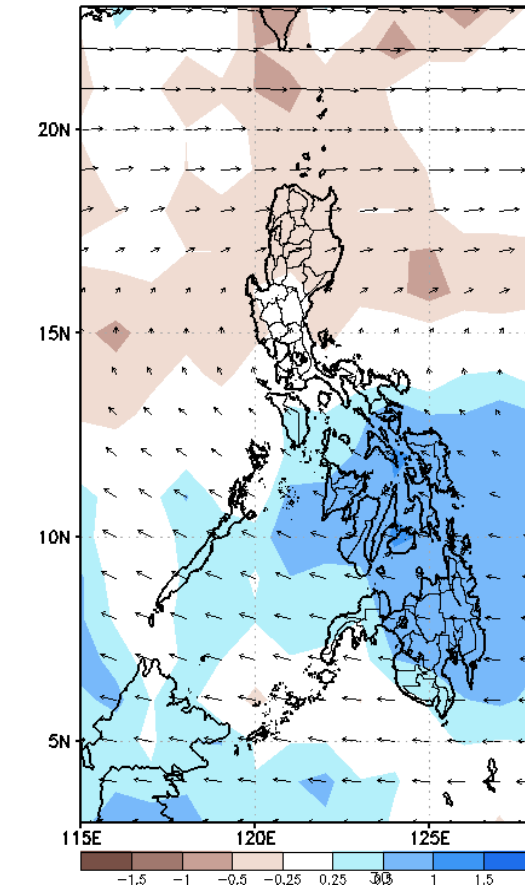
GEFS Week-1 850-hPa Divergence and Wind Anomaly  
Valid: 20230125 - 20230131



GEFS Week-1 700-hPa Divergence and Wind Anomaly  
Valid: 20230125 - 20230131



GEFS Week-1 200-hPa Divergence and Wind Anomaly  
Valid: 20230125 - 20230131

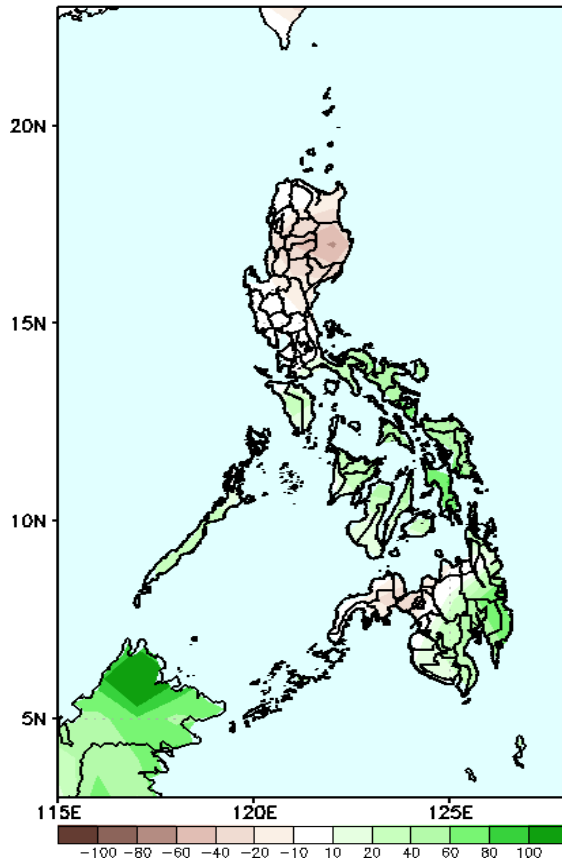


Northeast Monsoon is forecasted to affect most parts of Luzon and eastern Visayas while Easterlies is forecasted to affect Mindanao during the forecast period.

# Precipitation Anomaly and Exceedance Probability > 25/50 mm

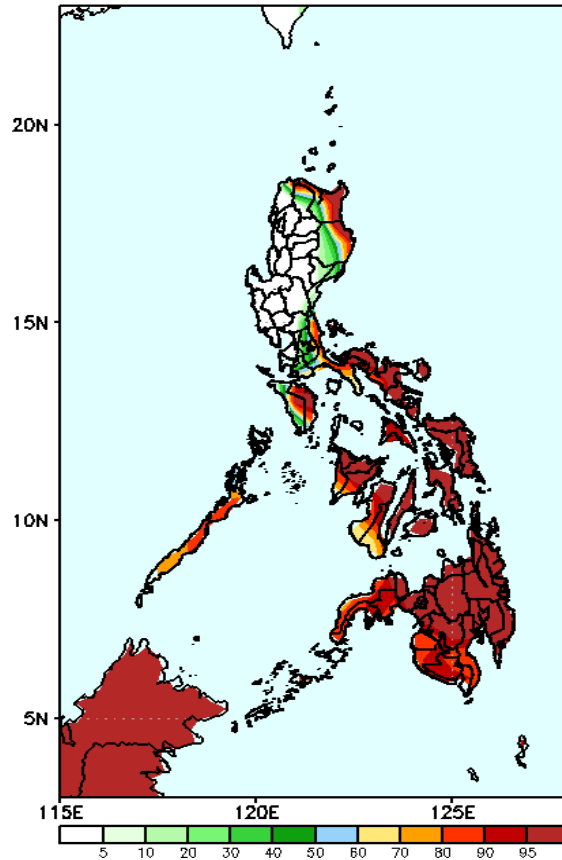
Week 1: Jan 25 - 31, 2023

GEFS Week-1 Precip Anomaly  
Valid: 20230125 - 20230131



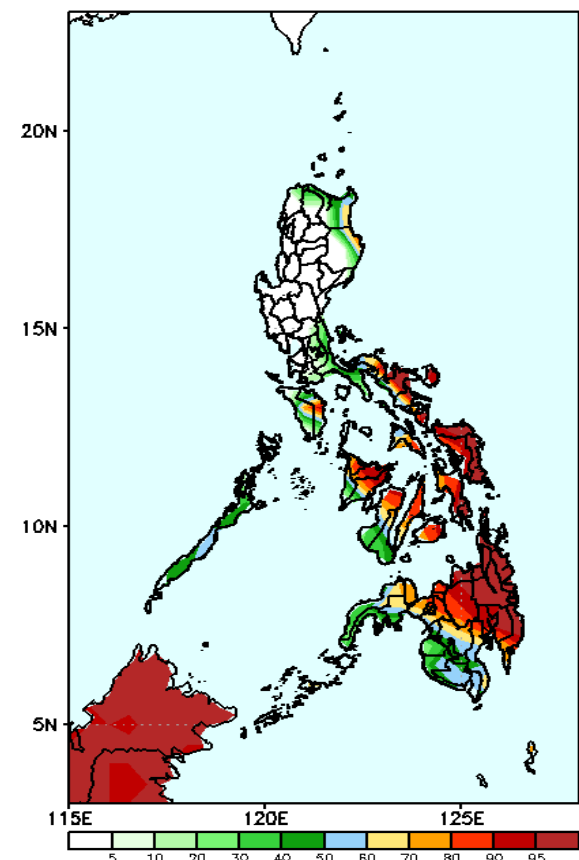
Increase of rainfall of more than 40 - 80mm in Bicol region, most of Visayas and Mindanao 20-40mm rainfall deficit in Northern Luzon and Zamboanga Peninsula during the forecast period.

GEFS Week-1 Exceedance Prob. > 25mm  
Valid: 20230125 - 20230131



Very high probability of rainfall to exceed 25mm in most parts of Eastern Luzon, Bicol region, MIMAROPA and most parts of Visayas and Mindanao while less likely for the rest of Luzon during the forecast period.

GEFS Week-1 Exceedance Prob. > 50mm  
Valid: 20230125 - 20230131

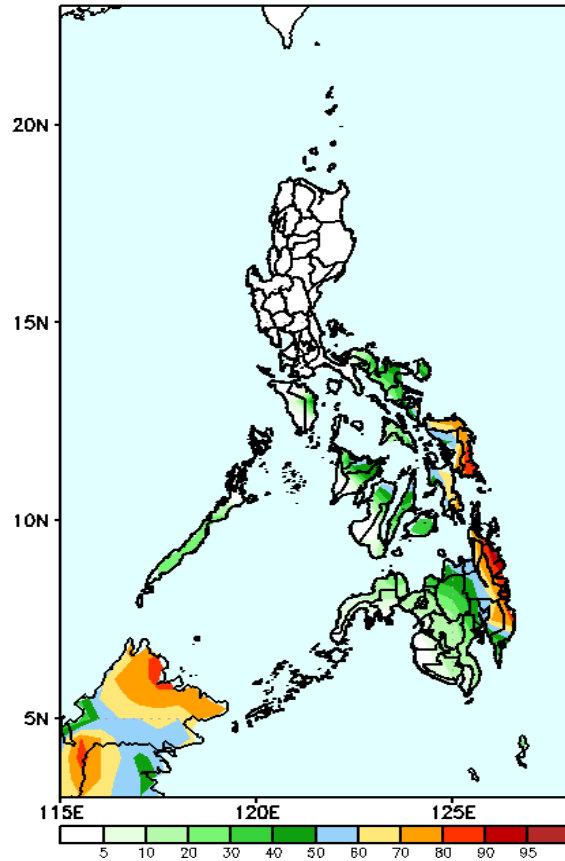


Very high probability of rainfall to exceed 50mm in some parts of Cagayan and Isabela, most parts of Bicol region, most parts of Visayas (except some areas in Western Visayas) and Mindanao (except most parts of Western Mindanao) while less likely for the rest of the country during the forecast period.

# Exceedance Probability > 100/150/200 mm

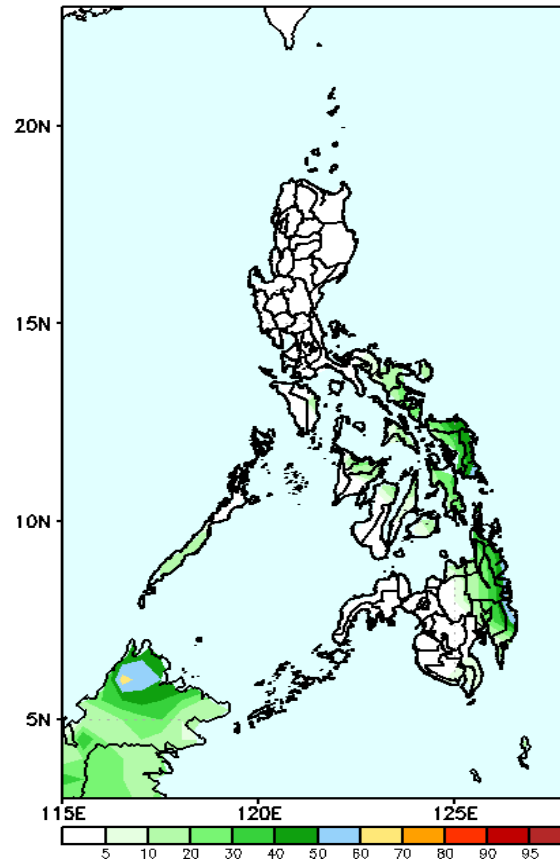
Week 1: Jan 25 - 31, 2023

GEFS Week-1 Exceedance Prob. > 100mm  
Valid: 20230125 - 20230131



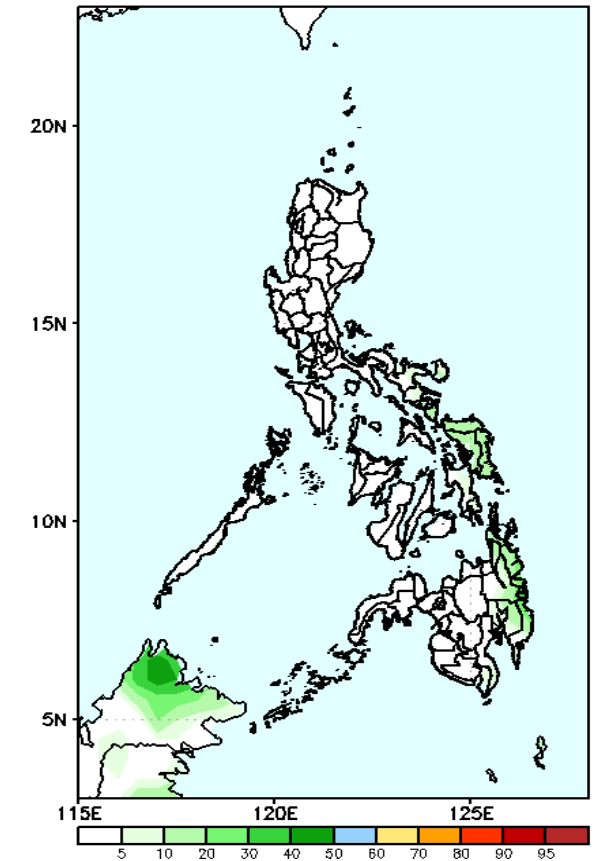
High probability of rainfall to exceed 100mm in most parts of Eastern Visayas and Eastern Mindanao while less likely for the rest of the country during the forecast period.

GEFS Week-1 Exceedance Prob. > 150mm  
Valid: 20230125 - 20230131



Low probability of rainfall to exceed 150mm in most parts of the country during the forecast period.

GEFS Week-1 Exceedance Prob. > 200mm  
Valid: 20230125 - 20230131

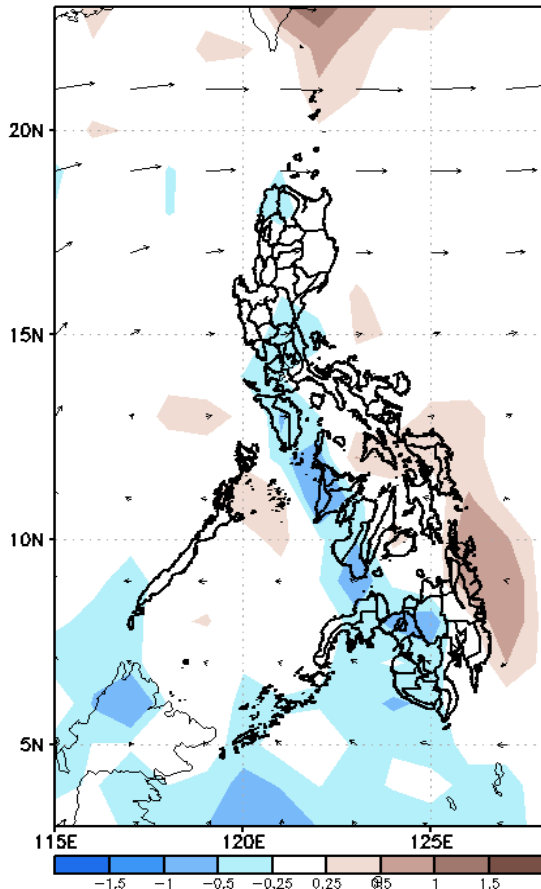


Low probability of rainfall to exceed 200mm in most parts of the country during the forecast period.

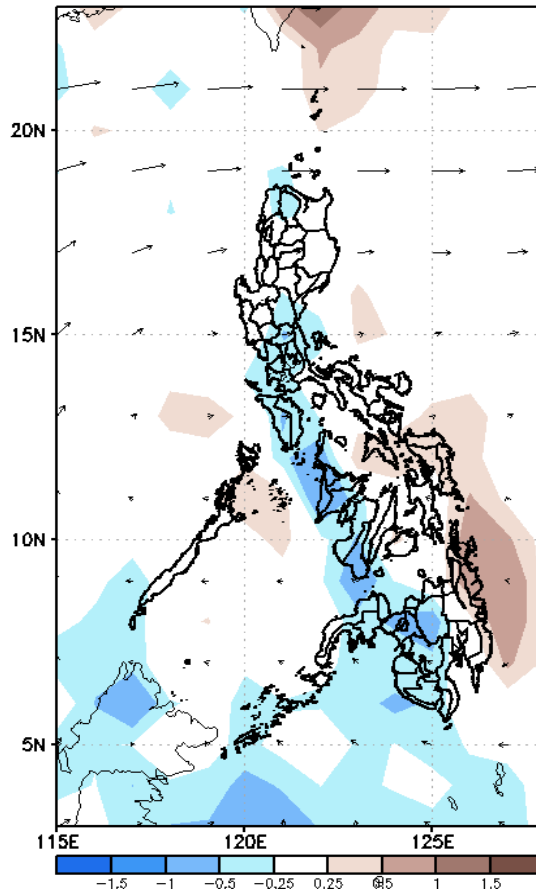
# GEFS Week-2 Forecasts: Wind Anomaly Forecast

Week 2: Feb 01 - 07, 2023

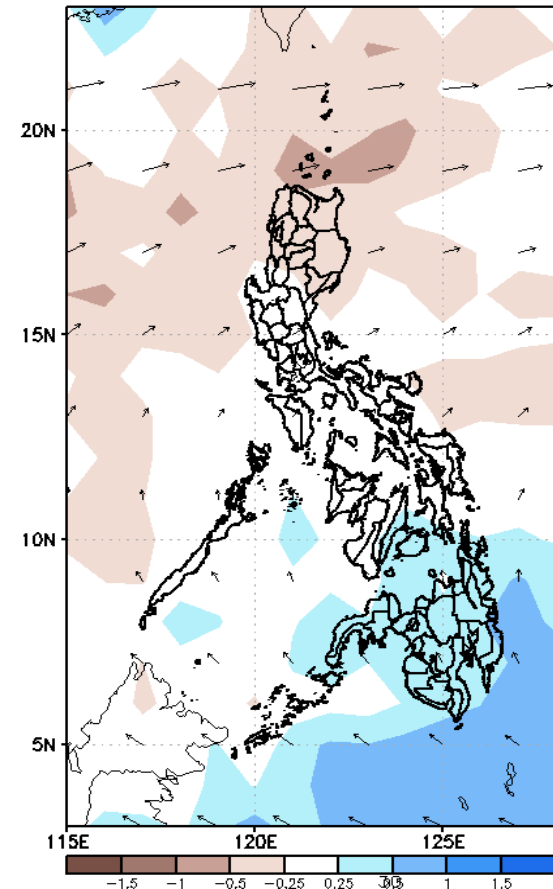
GEFS Week-2 850-hPa Divergence and Wind Anomaly  
Valid: 20230201 - 20230207



GEFS Week-2 700-hPa Divergence and Wind Anomaly  
Valid: 20230201 - 20230207



GEFS week-2 200-hPa Divergence and Wind Anomaly  
Valid: 20230201 - 20230207

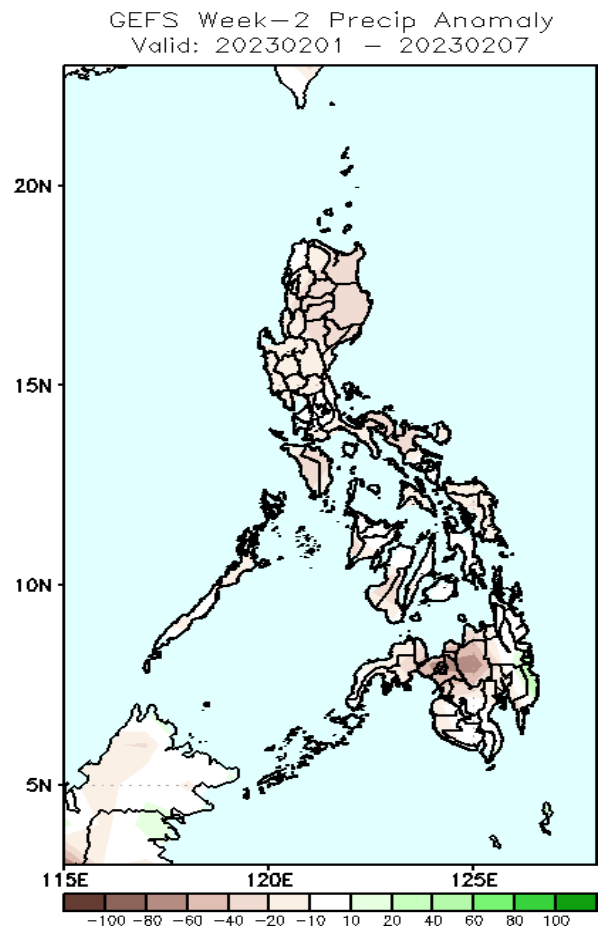


Northeast Monsoon is forecasted to affect Northern and Eastern Luzon while Easterlies is forecasted to affect the rest of the country during the forecast period.

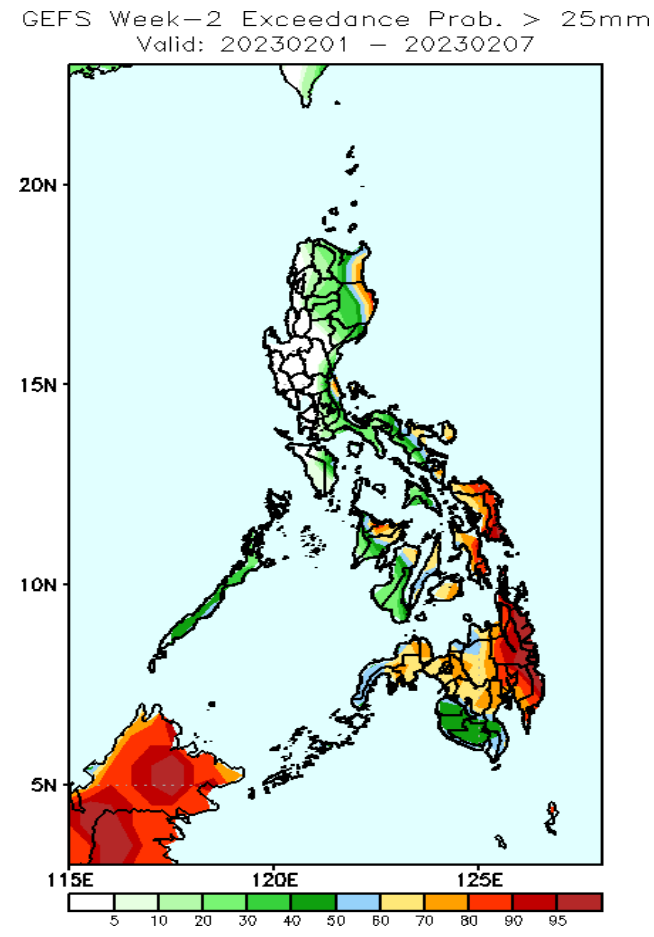


# Precipitation Anomaly and Exceedance Probability > 25/50 mm

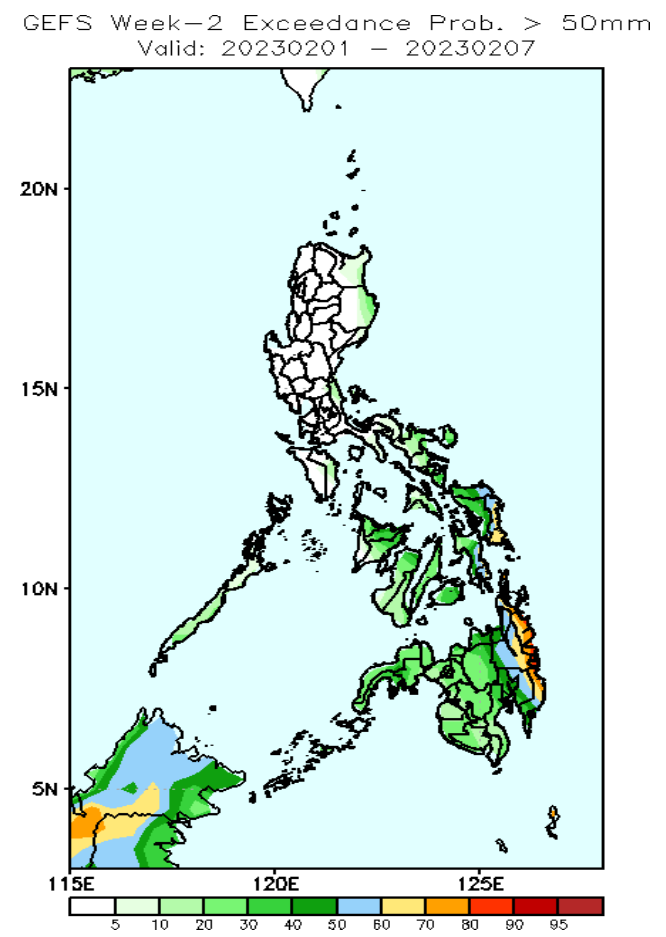
Week 2: Feb 01 - 07, 2023



Decrease of rainfall of 20 – 60mm is expected in most parts of the country; 60 – 100mm decrease in Bukidnon and Lanao provinces during the forecast period.



Very high probability of rainfall to exceed 50mm in the eastern section of Cagayan and Isabela, some parts of Bicol region, most parts of Eastern and Central Visayas, some areas in Western Visayas and most parts of Mindanao (except most parts of SOCCSKARGEN) while less likely for the rest of the country during the forecast period.

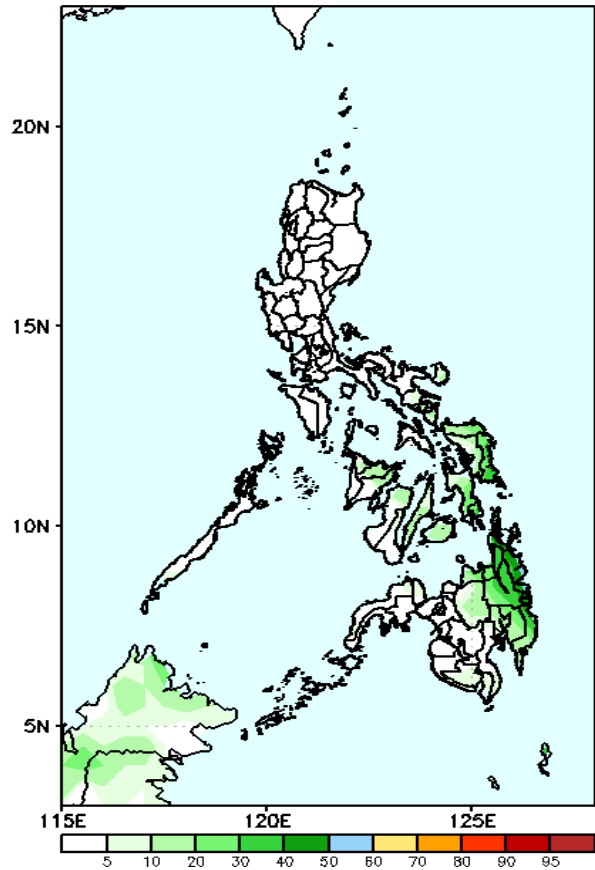


60 – 70% probability of rainfall to exceed 50mm in Eastern Samar and most parts of Eastern Mindanao while less likely for the rest of the country during the forecast period.

# Exceedance Probability > 100/150/200 mm

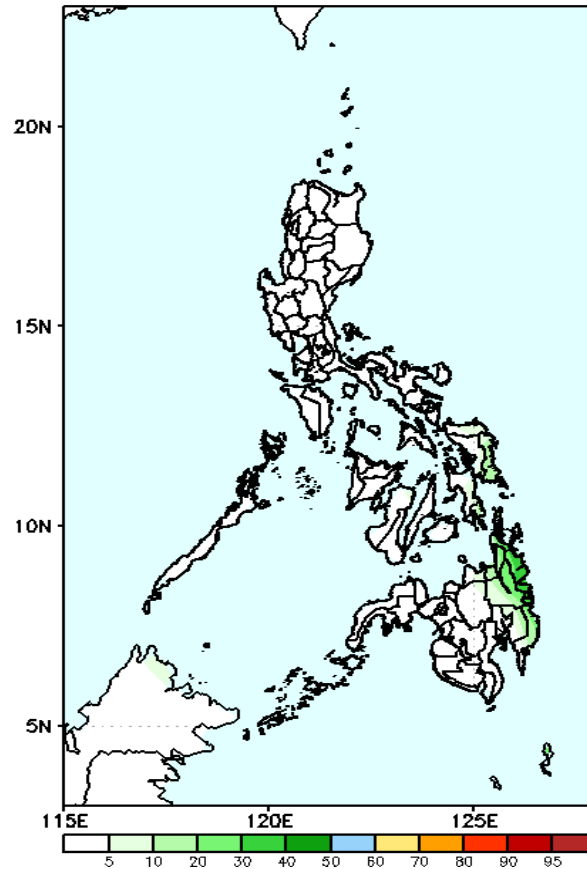
Week 2: Feb 01 - 07, 2023

GEFS Week-2 Exceedance Prob. > 100mm  
Valid: 20230201 - 20230207



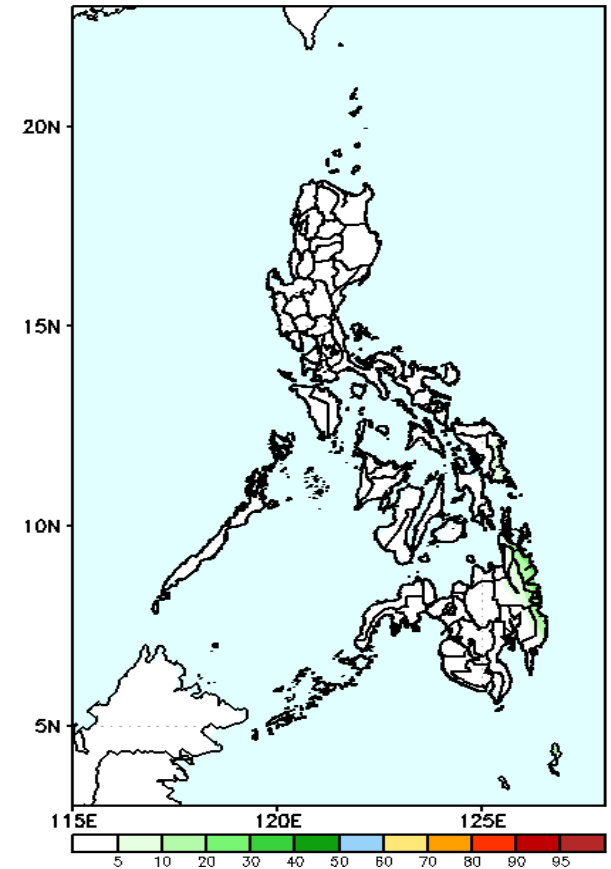
Low probability of rainfall to exceed 100mm in most parts of the country during the forecast period.

GEFS Week-2 Exceedance Prob. > 150mm  
Valid: 20230201 - 20230207



Low probability of rainfall to exceed 150mm in most parts of the country during the forecast period.

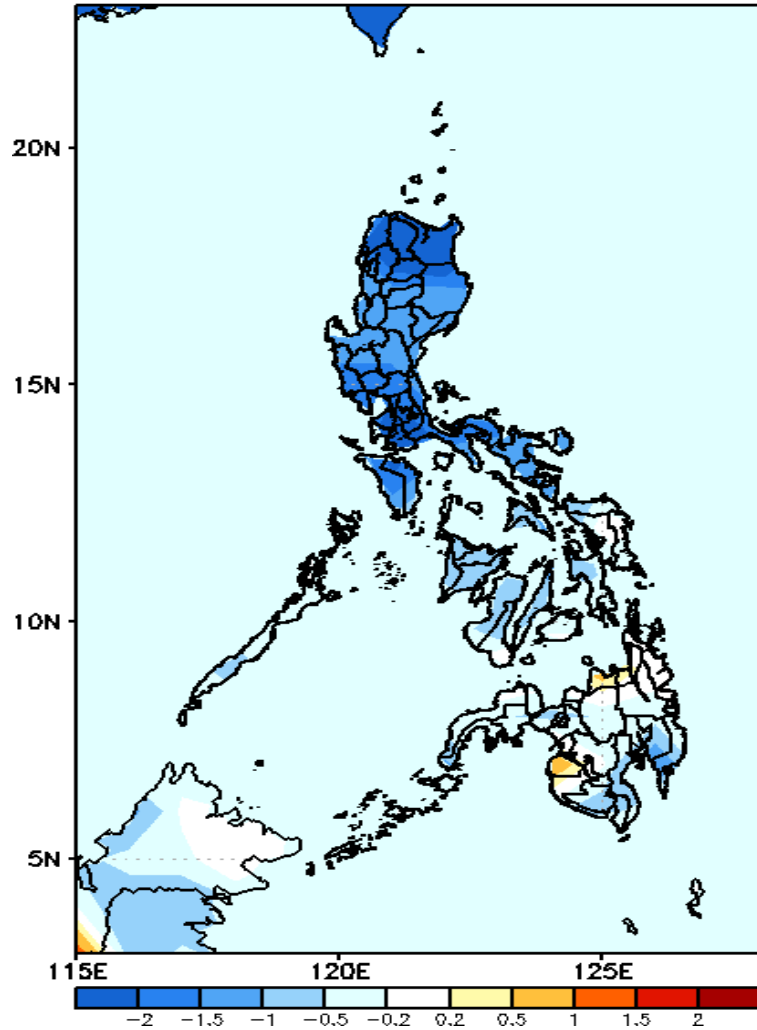
GEFS Week-2 Exceedance Prob. > 200mm  
Valid: 20230201 - 20230207



Low probability of rainfall to exceed 200mm in most parts of the country during the forecast period.

# GEFS Week-1 & 2 Forecasts: T2m Anomaly

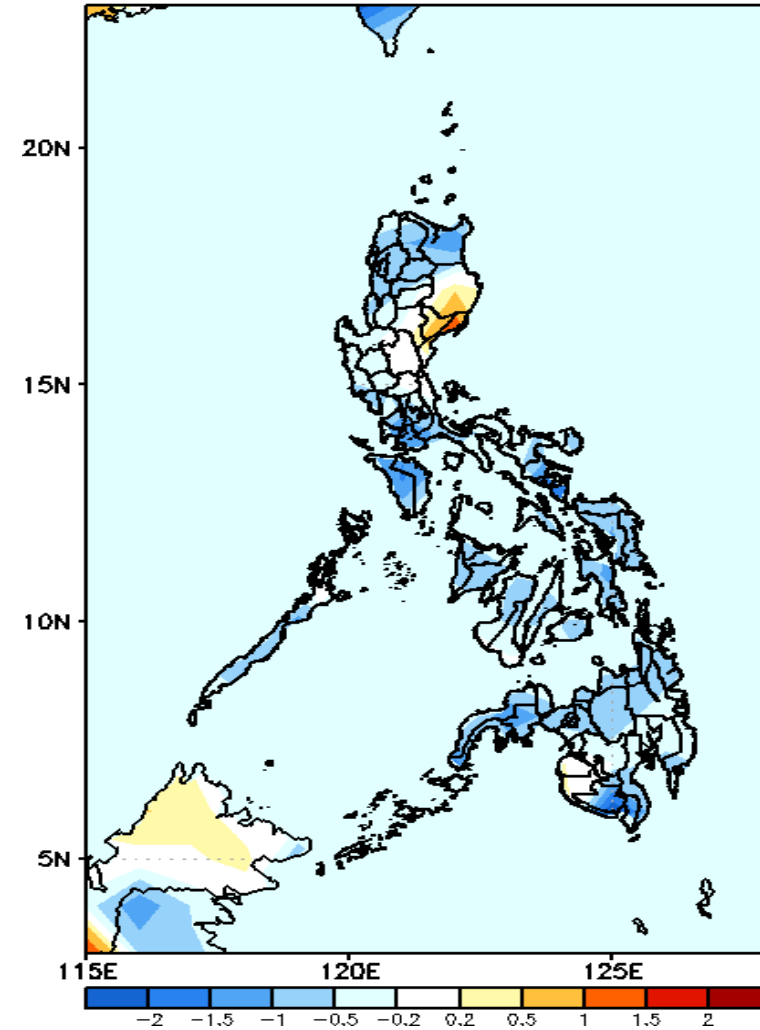
GEFS Week-1 T2m Anomaly  
Valid: 20230125 - 20230131



**2m Temperature Week 1: Jan 25-31, 2023**

Average to cooler than average surface air temperature will likely experience in most parts of the country except Misamis Oriental and Maguindanao during the forecast period.

GEFS Week-2 T2m Anomaly  
Valid: 20230201 - 20230207



**2m Temperature Week 2: Feb 01 - 07, 2023**

Average to cooler than average surface air temperature will likely experience in most parts of the country except Isabela and Quirino during the forecast period.